

# January 2025



## Mt. Hope Lutheran Church

### *Words from Pastor Fran*

*And the One sitting on the throne said, “Look, I am making everything new!” Revelation 21:5 NLT*

The new! Did you get some good new things for Christmas? It can be such an enjoyable experience to get something new. And what about beginning a New Year?! Are you looking forward to any “new beginnings” for 2025?

As followers of Jesus in the 21<sup>st</sup> Century, and as much as we enjoy celebrating the coming of Jesus the first time, we remember that we are eagerly anticipating the second Advent. Even as Jesus rules now, we know that He will return. We eagerly anticipate Jesus’ return when He will once and for all time judge the living and the dead and make all things new.

*Then I saw a new heaven and a new earth, for the old heaven and the old earth had disappeared. And the new Jerusalem, coming down from God out of heaven like a bride beautifully dressed for her husband. Revelation 21:1-2 NLT* What a picture!

We celebrate all that we have received from our good and gracious God and look forward to what is ahead!

Changing the focus, did you *give* any gifts that “wowed”? Did you experience the old saying, “it is better to give than to receive”? [Actually, that’s](#) a verse from Scripture, isn’t it? *And I have been a constant example of how you can help those in need by working hard. You should remember the words of the Lord Jesus: “It is more blessed to give than to receive.” Acts 20:35 NLT*

We will be spending some time in 2025 discussing opportunities to serve our Lord through giving. Giving includes but is much more than the giving of money. We are called to give and be stewards of our time, talents, and treasures. All three, time, talents, and treasures, are needed by others and are given to us by our Lord to give away in loving and serving our neighbors. There are many opportunities at Mount Hope in which to serve: POBLO Twin Cities (our International Friendship Center), LWML (Women of Hope), Mount Hope Prayer Force, InTouch Ministries, GriefShare, CarePortal, altar guild, hospitality team (funeral/coffee/welcome), music ministry/tech booth, Bible studies, Sunday School, VEAP and other community involvement. Would you consider getting involved this year?

We stand at the door of 2025 filled with joy because of our Lord Jesus. And we are grateful for this faith family, Mount Hope Lutheran Church. We are grateful for the work He has given us to do while we wait for His return. We love and serve our Lord here as we love our neighbors.

*Let your good deeds shine out for all to see, so that everyone will praise your heavenly Father. Matthew 5:16 NLT*

***A personal note: Thank you so very much for all the Christmas cards, gifts, and your generous cash gift from the Mount Hope family. We are so blessed to be serving with all of you! Mount Hope, what a wonderful place, Where Guests become Friends and Friends become Family.***

Your friend,

*Pastor Fran Green*

## It's That Time!

Well, we're into the New Year and it's that time. You know, when we look back into the year past and how things fared. Oh yes, and then there are those resolutions we made and committed ourselves to. How did they work out?

As believers, and I think you will agree, we should ask what God wants us to do in daily situations. We need to listen and be sensitive to His voice during these times. And by keeping our minds attuned to Him, we may begin to better understand the significance of some of the decisions or resolutions we make.

After reading a recent prayer, which I would like to share with you, I really began to reevaluate how I go about making some of my decision and even "resolutions".

**Father when I've been hurt, help me breathe and trust in You.**

**When I get defensive and try to protect myself, help me breathe and trust in You.**

**When retaliation is the only thing on my mind, help me breathe and trust in You.**

**When I fear everything might go wrong again, help me breathe and trust in You.**

**When forgiveness seems impossible, help me breathe and trust in You.**

**When I offer grace (even when it makes no sense), help me breathe and trust You.**

**In Jesus' name, Amen \***

Looking at the past year, can you see God's wisdom in leading you to make right decisions/resolutions? Let us choose to trust Him, and receive the blessings He wants to give to us. Let us make 2025 the year!

Blessings,

*Fran Wallin*

\*In Touch Ministry



**Centro Esperanza MN**

Have you noticed increased activity and energy in our church recently and seen a few new faces around the building? Please take a moment to say hello or "Hola" and introduce yourself.

You may remember at our most recent voter's meeting; we voted to have **Centro Esperanza Minnesota** join us here at Mount Hope. They have been busy moving things in recently and will be making our church building home for their congregation. They are a Hispanic, conservative Christian faith community offering worship services at 1:00pm on Sunday afternoons, as well as holding various Bible study and discipleship classes mostly evenings during the week.

We are excited to have them here and will have a welcome celebration soon. BTW, did you know that Esperanza is translated Hope in English? It seems that it was meant to be, welcome Centro Esperanza!

# Events, Activities & This-n-That

## WEEKLY EVENTS

### Sunday Adult Bible Study

10:45am in the Library

### Sunday School

10:45am—classroom

### Mondays - GriefShare

GriefShare will start their next session on February 17th. Contact Joy Schneider for information.

### Tuesdays @ Two

Mt. Hope hosts conversation and coffee on Tuesdays at **2:00 pm**. All are invited to attend. We usually have some treats too!



## ONGOING EVENTS

### 1<sup>st</sup> Sunday of the Month

There is usually a special **Children's Message** during the Sunday morning worship. Also on that day we take a **Noisy Offering!** Bring your "noisy" coins that day to drop in the bucket (paper money donations gladly accepted also!) Monies go to the Children's Ministry program.

### Card Ministry

Take a moment to fill out the **February** birthday cards in the narthex. Write a little bible verse, add a birthday greeting and bless those at Mt. Hope who have birthdays in February. We're always one month ahead so when the new month begins, we can start distributing the greetings.



### Monthly Book Club

Starting in January we will now meet at Marilyn's home at Real Life. Any questions or need ride call Renata at 952-881-7160.



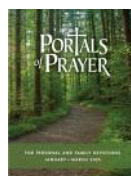
You may want to call the library now for the next two book selections: January's is *THE FIVE WISHES OF MR. MURRAY MCBRIDE*, the February choice is *WHEN BREATH BECOMES AIR*. Both are in the library system.

We welcome new readers! *Renata Melby*

### Also Book Related

We are always looking for donations for our outdoor **Free Lending Library** out on Old Shakopee. Drop off your donations on the cart in our library.

### Portals of Prayer



The Jan-Mar Portals of Prayer is available at the South Information Nook just outside the fellowship hall. If you're not able to pick up a copy, just let the office know and we can send one out to you.

Also available outside the office is the Hope-Full Living devotionals for Jan-Mar.



### 2025 Offering Envelopes

Your 2025 offering envelopes are available to pick up at church. Let the office know if you would like them to be sent out to you.

A special thank you to Rania Nazy who has donated two olive wood creations to Mt. Hope, namely "Jesus, The Good Shepherd," and also "Jesus, Blessing the Children."



## CHRISTMAS UNDECORATING DAY

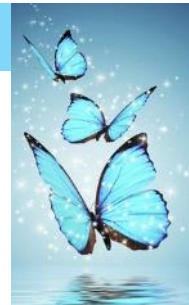
Join us Monday, Jan. 6th at 4:00pm to help un-Christmas the church. Many hands make light work, and we'll provide pizza for when we're done!!

### Cancelled Stamps Collection

Did you know that you can donate your cancelled stamps for charity? Save your stamps that have their perforations intact, leave at least ¼ inch on each side of the stamp when cutting it from the envelope or postcard. Place your cut cancelled stamps in the labeled bin located on the shelf above the coat rack.

## WOMEN OF HOPE

*“Therefore if anyone is in Christ, he is a new creation,  
the old has gone, the new has come!” 2 Cor. 5:17*



It is exciting to enter into a new year especially with new friends coming into our church. The Bible says we too are a new creation even as we serve together with the blessing of faithful friends through the years.

- ★ In January, we will again be **collecting baby items** for New Life Family Services. If you would like more information please contact Corinne Condon. If you have items to donate, please place them in the baby crib in the narthex.
- ★ The next **Women of Hope Meeting** will be Saturday January 11, 2025 at 9:30AM. Please consider coming as we share ideas over some special treats. New ideas and new people are always welcome.
- ★ **Coffee Servers** are needed for our Sunday fellowship time! This is set up as a monthly commitment. Don't let the monthly commitment scare you! We know schedules can change and maybe you might not be available for one week during your month, fear not, we can work with you on that and try to give some options for a sub. Contact Darlene W. to sign up if you have any questions.
- ★ Looking ahead, save Saturday February 8, 2025 for our Annual **Valentine's Tea**. There will be a special speaker and of course the delicious food. This is a perfect opportunity to bring a guest and hear about the Love that not only comes from God but that we also share together.

Happy New Year everyone as we celebrate with new friends, new serving opportunities and new ways to be thankful to God as He leads us-His New Creation in 2025.



- The most recent VEAP delivery was made on Dec. 6th, which was 44 pounds, including some hand warmers, plus one \$25.00 gift card.
- For the month of January the featured item is the brown paper grocery bags. (no plastic bags please)
- In addition to shelf-stable food, VEAP also accepts and highly encourages donations of household products like laundry detergent, toilet paper, soap, paper towels, shampoo, toothpaste, deodorant and all other home and personal hygiene products (including feminine hygiene items and adult diapers). They also accept pet food for clients with furry ones in their home.

Karen Mueller, *Ministry Partner Rep.*

### PRAYER CHAIN



Each month we provide for you a daily prayer topic list. You can find it located at the information table outside of the office or at a number of other places throughout the church.

If you have a personal prayer request for you, a loved one, or a friend, our prayer group will include it in our prayers, and pass it along to Pastor Fran to include during worship (if desired). And, we rejoice when prayers are answered! If there is no longer a need to be included in our prayers, also please let us know.

If you have a personal prayer request, send your prayer requests to me at [frawocor489@aol.com](mailto:frawocor489@aol.com) or by telephone at 952-707-1881. Fran W.



Some of you may be aware of this local store, but probably many are not! Memories of Home is a unique gift and home décor business that is an intentional beautiful blending of products.

The purpose of the store is to glorify God with faith-based merchandise offering Christian gifts to celebrate not only various occasions such as weddings, baptisms, First Communion, Confirmation, anniversaries, and memorials, but also the gift of everyday life. The items are encouraging and uplifting to remind individuals of the much-needed message of Jesus' love and forgiveness.

They are located at 9635 Anderson Lakes Pkwy (off Hwy 169 next to Jerry's Foods) and is owned and operated by Joann Shockey (wife of Pastor Shockey@St. Peter's Luth.)

Ph.: 612-799-6189 Website: [memoriesofhomestore.com](http://memoriesofhomestore.com)



**NOW SHOWING**  
**Leave No Trace**  
**REDEMPTION LUTHERAN**  
**JANUARY 5TH@6PM**

**CHRIST IN CINEMA**

**From our Brothers and Sisters at Redemption Lutheran:**

Join us on the evening of the first Sunday of each month for movie night! We will watch a popular movie and discuss the message through a Christian lens. Popcorn and Pop will be available for everyone joining us. So bring the whole family for our showing of "Leave No Trace" on Jan. 5th at Redemption Lutheran (927 E. Old Shakopee Rd). See you there!

**FEED MY STARVING CHILDREN**



**MOBILEPACK™**

**Jan. 24 & 25, 2025**  
**@ Cross View Lutheran**  
**6645 McCauley Trail West,**  
**Edina, MN**

**THE GOAL:**  
 Pack 100,000+ Meals  
 That's enough to feed  
 277 children for 1 year.

**OUR NEED:**  
 500 Volunteers & \$25,000  
 Our suggested donation of  
 \$50 per person will cover  
 the cost of the food.

Please sign up to VOLUNTEER and/or DONATE at [give.fmssc.org/crossview](http://give.fmssc.org/crossview).







**You're invited to a Life Line Screening event!**

**Where: Mount Hope Lutheran Church**  
**When: January 30, 2025**

Life Line Screening is the nation's leader in **Stroke and Cardiovascular Disease Risk Screenings.**

*Trusted by over 10 million customers.*

Screenings are simple and painless. Get peace of mind or early detection.

**Who should attend:**  
 Anyone over the age of 40

**Special Member Pricing for \$159**

- ♥ Carotid Artery Disease Screening
- ♥ Atrial Fibrillation Screening
- ♥ Abdominal Aortic Aneurysm Screening
- ♥ Peripheral Artery Disease Screening
- ♥ Plus a **FREE** Hypertension Screening

**4 ways to book your appointment...**

Call 888-814-0466 and use promo code HSCA001

Visit  [LLSA.SOCIAL/HSCA](http://LLSA.SOCIAL/HSCA)



Text the word "circle" to 216-279-1607

These tests cannot detect all risk factors for all conditions, such as and including the presence of coronary artery disease. Those with abnormal results should discuss possible next steps with their family healthcare provider and ensure they understand the risk and benefits of any additional testing or procedures.

# January Celebrations!!

## BIRTHDAYS

1/2 Brady McMullen  
1/4 Vicki Johnson-Schmidt  
1/6 Max Alan Blauvelt  
1/8 Matt Frein  
1/10 Marilyn Nelson  
1/11 Jenn Schleifer  
1/13 James Froemming  
1/14 Peggy Maas  
1/15 Stephanie Hinz  
1/15 Tammy Green  
1/19 Zachery Brantner  
1/20 Anika Quittschreiber  
1/27 Darlene Wendt  
1/28 Claire McMullen  
1/30 Tracie Klug-Melbostad  
1/31 Steve Sundseth

## BAPTISM BIRTHDAYS

1/1 Shirley Favorit  
1/9 Linda Carstens  
1/11 Lea Fox  
1/12 D. J. Fox  
1/13 Ed Borgen  
1/15 Karen Mueller  
1/19 Arlene Schmidt  
1/20 Pastor Fran Green  
1/29 Ina Adams

## ANNIVERSARIES

1/1 Craig & Tricia Regan – 3yr



## Serving in December

**Coffee/Treats & Clean up:** Corinne Condon

**Kitchen/Receptions:** Corinne Condon and Darlene Wendt

**Altar:** Holly Traetow

**Elders:** 1/5 - Steve S., 1/12 - Jerry L., 1/19 - Al J., 1/26 - Dave S.

## Altar Flowers

**Jan. 5** – Corinne Condon—in celebration of Mother and Granddaughter’s birthdays

**Jan. 12** – (open)

**Jan. 19** – (open)

**Jan. 26** – (open)



Sponsoring the altar flowers is a beautiful way to honor loved ones. Flowers are often given to mark special life events such as birth and birthdays; anniversary of a wedding, baptism, confirmation; the memory of a loved one; or as a thanksgiving for life’s blessings.

The **2025 Altar Flower Sign Up Calendar** is now up on the bulletin board in the information hallway. Please sign up for a date and place your \$30 check, payable to the Women of Hope, in Karen Mack’s mailbox opposite the bulletin board. Karen Mack’s phone number is 952-831-7428 for any questions you may have.

**NOTE:** Each month, by the 20th, I send to the office, the next months list of people who have signed up to donate flowers. If, by chance, there is an open spot in the next month and you sign up after the 20th, please let me know, so I don’t miss your name and consequently have no flowers. Thank you.

# January 2025

Where Guests become Friends and Friends become Family

## Mount Hope Lutheran Church

3601 W Old Shakopee Rd., Bloomington MN 55431

[www.mthopelutheran.org](http://www.mthopelutheran.org)

[church@mthopelutheran.org](mailto:church@mthopelutheran.org)

952 888 5059



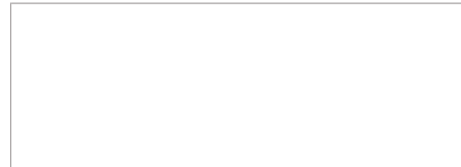
Sunday	Monday	Tuesday	Wednesday	Thursday	Friday	Saturday
			New Years Day 1 Office Closed	2 7:00pm Bible Prep. Institute 7:00pm Worship Tm Rehearsal	3 10:00am IFC 1:30pm Book Club @ Marilyn's 6:30pm Leaders Discipleship	4 10:00am Teen Discipleship
5 9:30am Worship 10:45am Ed. Hour 1:00pm Centro Esp. Worship	6 10:00am IFC 4:00pm Church Un-decorating	7 2:00pm Tues@2 7:00pm Youth Disc. 8:00pm AA	8 10:00am IFC 7:00pm Bible Study	9 7:00pm Bible Prep. Institute 7:00pm Worship Tm Rehearsal	10 10:00am IFC 6:30pm Marriage Discipleship	11 9:30am Women of Hope Mtg.
12 9:30am Worship 10:45am Ed. Hour 1:00pm Centro Esp. Worship	13 10:00am IFC	14 2:00pm Tues@2 7:00pm Youth Disc. 8:00pm AA	15 10:00am IFC 7:00pm Bible Study	16 6:30pm Govern Bd 7:00pm Bible Prep. Institute 7:00pm Worship Tm Rehearsal	17 10:00am IFC 6:30pm Leaders Discipleship	18 10:00am Teen Discipleship
19 9:30am Worship 10:45am Ed. Hour 1:00pm Centro Esp. Worship	20 10:00am IFC <b>Deadline for February News</b>	21 2:00pm Tues@2 7:00pm Youth Disc. 8:00pm AA	22 10:00am IFC 7:00pm Bible Study	23 7:00pm Bible Prep. Institute 7:00pm Worship Tm Rehearsal	24 10:00am IFC 6:30pm Women's Discipleship	25
26 9:30am Worship 10:45am Ed. Hour 1:00pm Centro Esp. Worship	27 10:00am IFC	28 2:00pm Tues@2 7:00pm Youth Disc. 8:00pm AA	29 10:00am IFC 7:00pm Bible Study	30 8:00am-5:00pm Life Line Screening 7:00pm Bible Prep. Institute 7:00pm Worship Tm Rehearsal	31 10:00am IFC	Feb 1
<b>Note:</b> Centro Esperanza MN activities are indicated by <i>ITALICS</i>						

**Mt. Hope Church Office Hours: Monday-Thursday, 1:00pm-5:00pm**

Mt. Hope Lutheran Church  
3601 W Old Shakopee Rd  
Bloomington, MN 55431



Address Service Requested



*This is a monthly publication of Mt. Hope Lutheran Church (LCMS) in Bloomington, MN. Any submissions for the newsletter need to be into the office by the 20<sup>th</sup> of the month. Publication is generally around the 25<sup>th</sup>, with the goal of being sent out/available to members by the end of the prior month. It is also available for viewing/download from our website.*

Other reading material currently available at the church:



- **January** MN South District News
- **Jan-Mar** Portals of Prayer
- **Jan/Feb/Mar** Sagacity Senior News
- **Winter** Lutheran Women's Quarterly
- **Winter** LWML MN South news
- **...and more!**

### **Sunday Morning Schedule**

9:30 am In-Person Worship

10:45 am Adult Bible Study, Sunday School (Sep-May)

### **Services Online at:**

**YouTube Channel:** Mount Hope Lutheran Church

**Facebook:** Mount Hope Lutheran Ch, Bloomington, MN

### **Mount Hope's Staff**

Fran Green      *Pastor*  
[pastor@mthopelutheran.org](mailto:pastor@mthopelutheran.org)

Katrina Wessel      *Music Director*  
[music@mthopelutheran.org](mailto:music@mthopelutheran.org)

Allen Petersen      *Administrative Assistant*  
[church@mthopelutheran.org](mailto:church@mthopelutheran.org)

Sam Killam      *Custodian*  
[skillam06@yahoo.com](mailto:skillam06@yahoo.com)

*The staff wishes to extend thanks to those members who remembered us at Christmas. We are privileged to serve and be a part of the Mt. Hope family!*